
RECOMMENDED OPERATING CONDITIONS

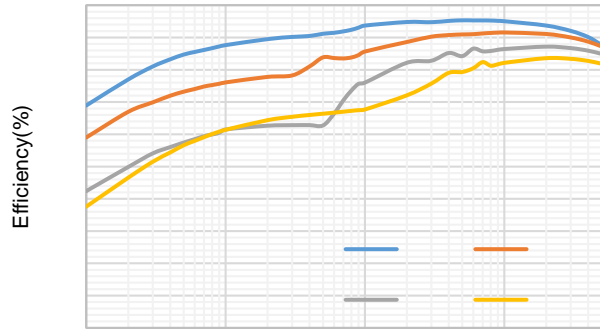
ESD RATINGS

- (1)
- (2)

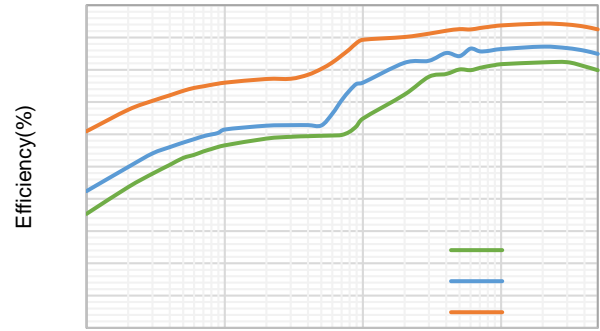
THERMAL INFORMATION

ELECTRICAL CHARACTERISTICS

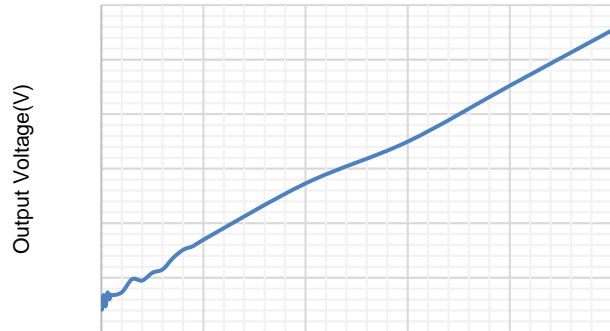
TYPICAL CHARACTERISTICS



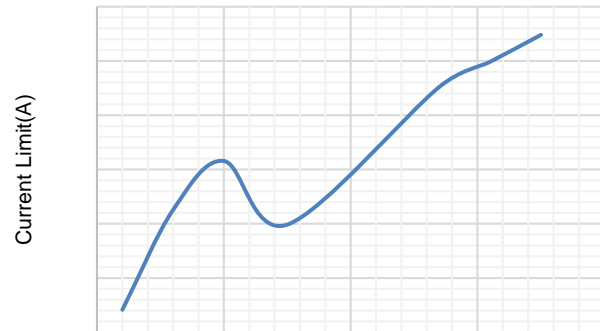
Output Current(A)



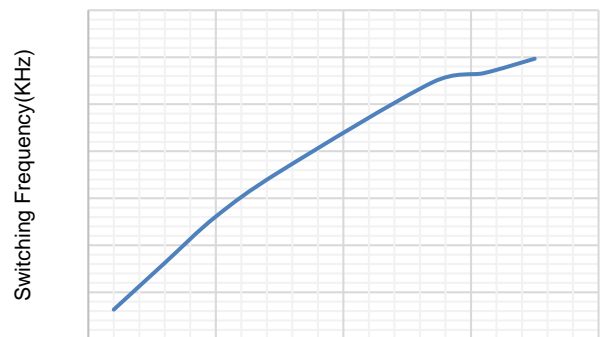
Output Current(A)



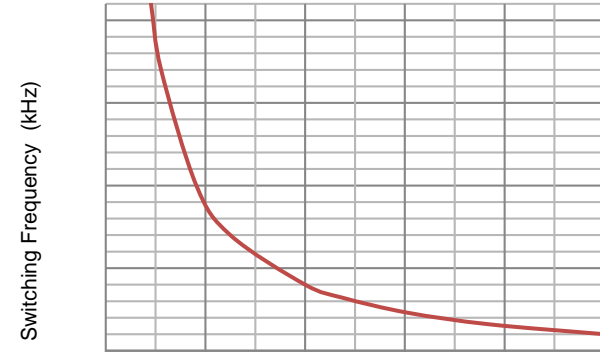
Output Current(A)



Temperature(°C)

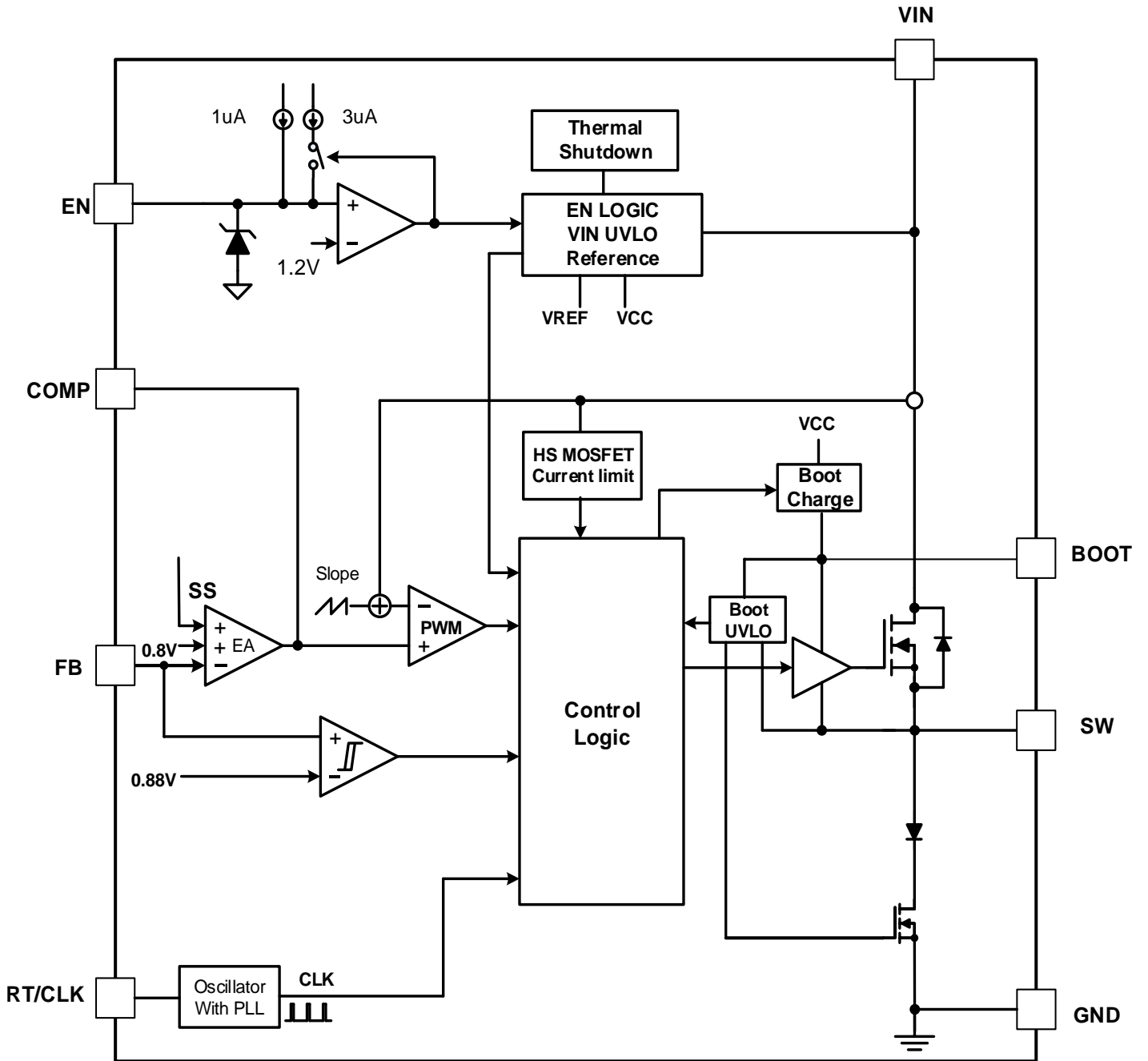


Temperature(°C)



Switching Frequency (KHz)

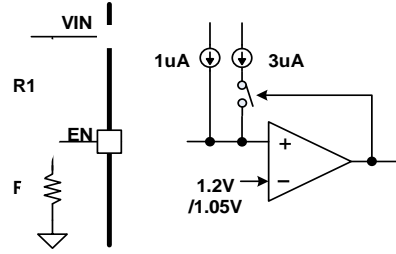
FUNCTIONAL BLOCK DIAGRAM



OPERATION

$$5 \frac{21}{75}$$

$$\frac{5}{5}$$



1%



— 5

— 5

5

WR

FDQ EH d 'nen-U</MC410.02 Tf 1 0 0 1 357.52 623.74 Tm 0 g 0 G

S



_____ 5 _____

2

5 _____

5 _____ 5 _____

_____ 5 _____

_____ 5 _____



—

5 —

5 —

5

5

5

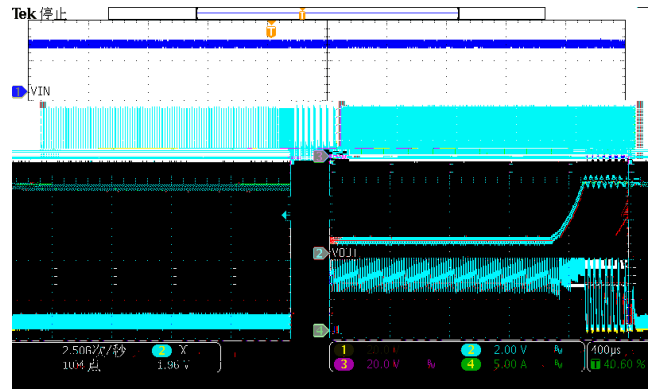
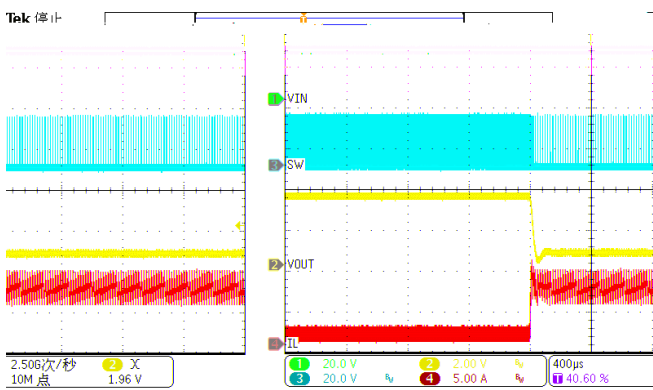
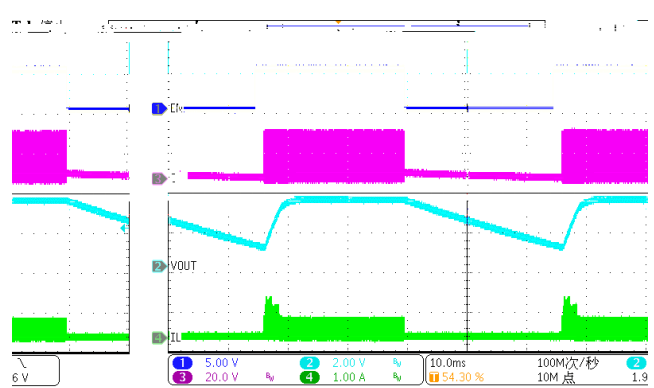
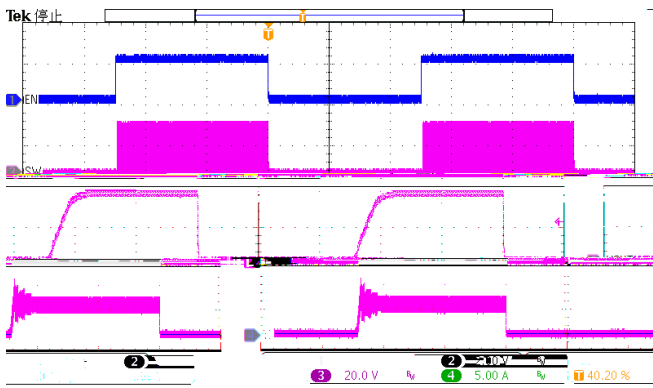
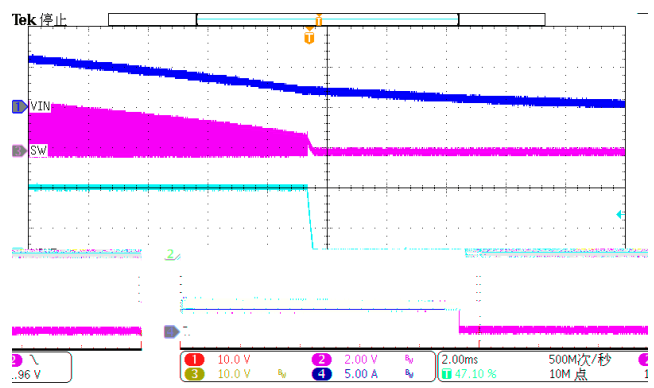
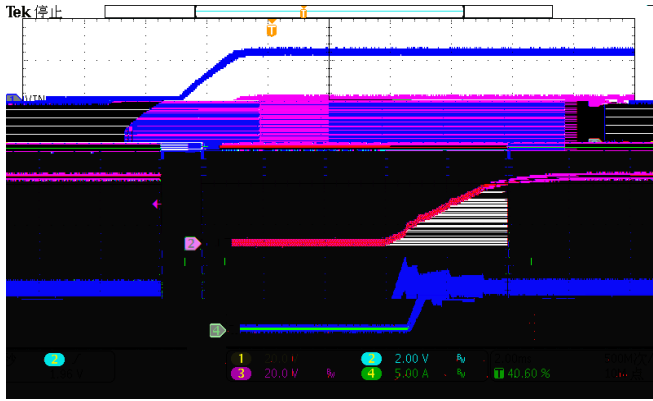
— —

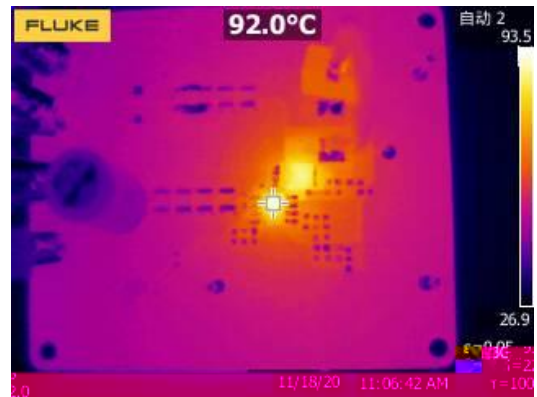
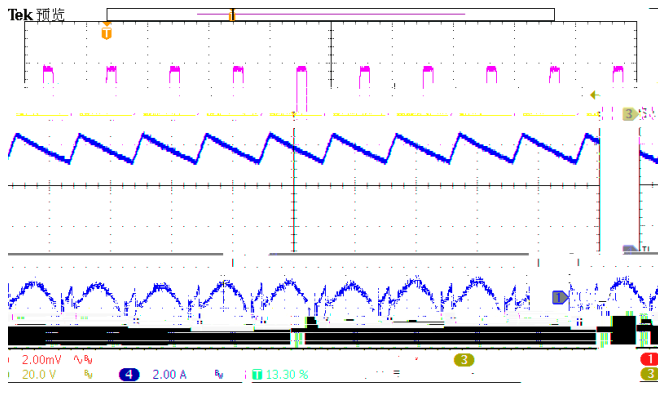
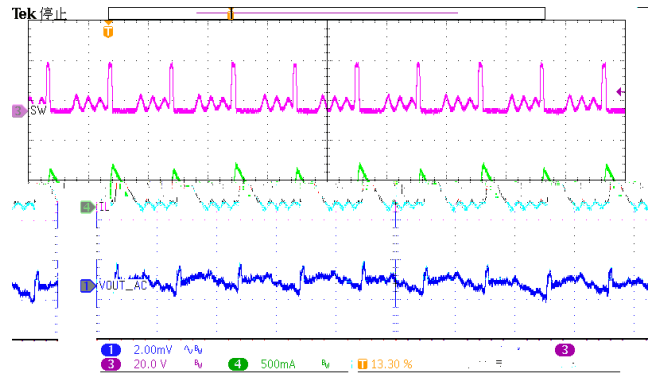
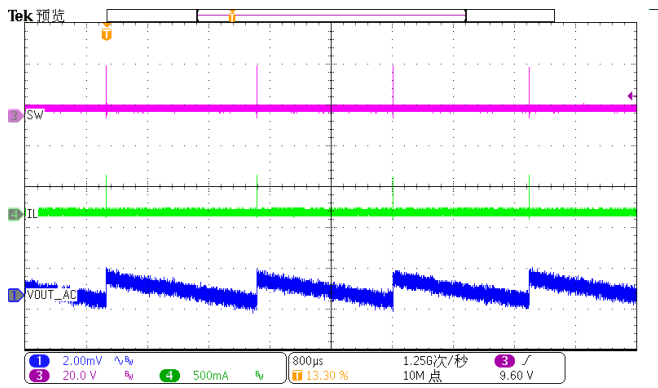
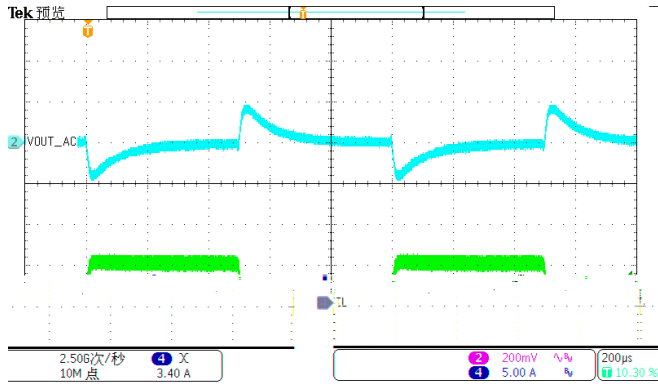
— —

—

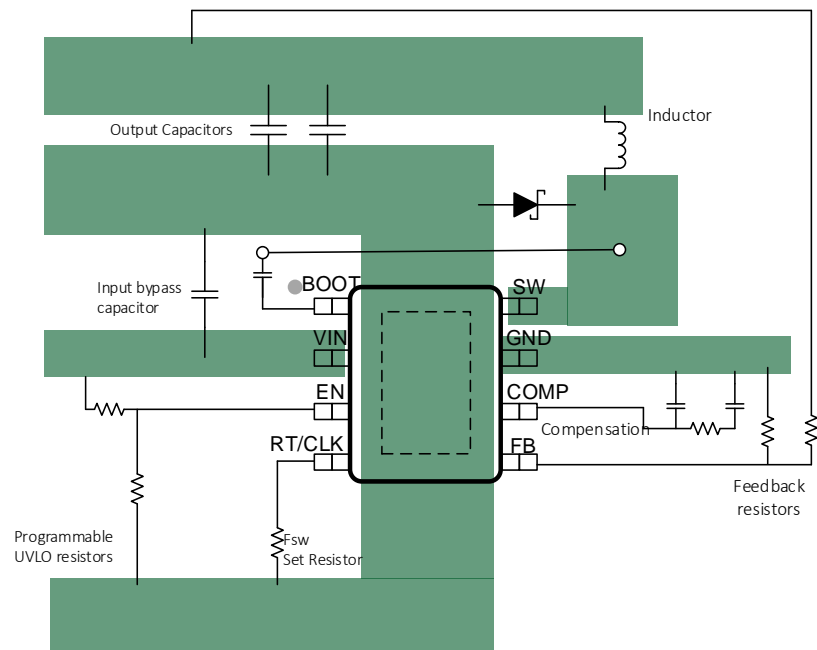
—







- 1.
- 2.
- 3.
- 4.
- 5.
- 6.
- 7.
- 8.
- 9.
- 10.



PACKAGE INFORMATION

TAPE AND REEL INFORMATION

