

4.5V-60V Vin, 3.5A, High Efficiency Step-down DCDC Converter with Programmable Frequency

FEATURES

DESCRIPTION

APPLICATIONS

REVISION HISTORY

DEVICE ORDER INFORMATION

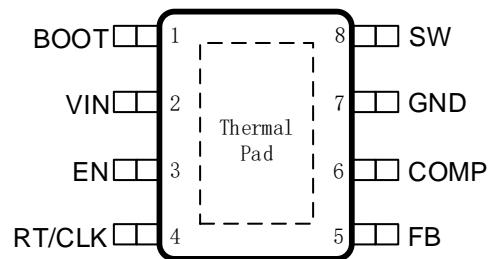
1)		

ABSOLUTE MAXIMUM RATINGS

(1)

(2)

PIN CONFIGURATION



PIN FUNCTIONS

RECOMMENDED OPERATING CONDITIONS

ESD RATINGS

- (1)
- (2)

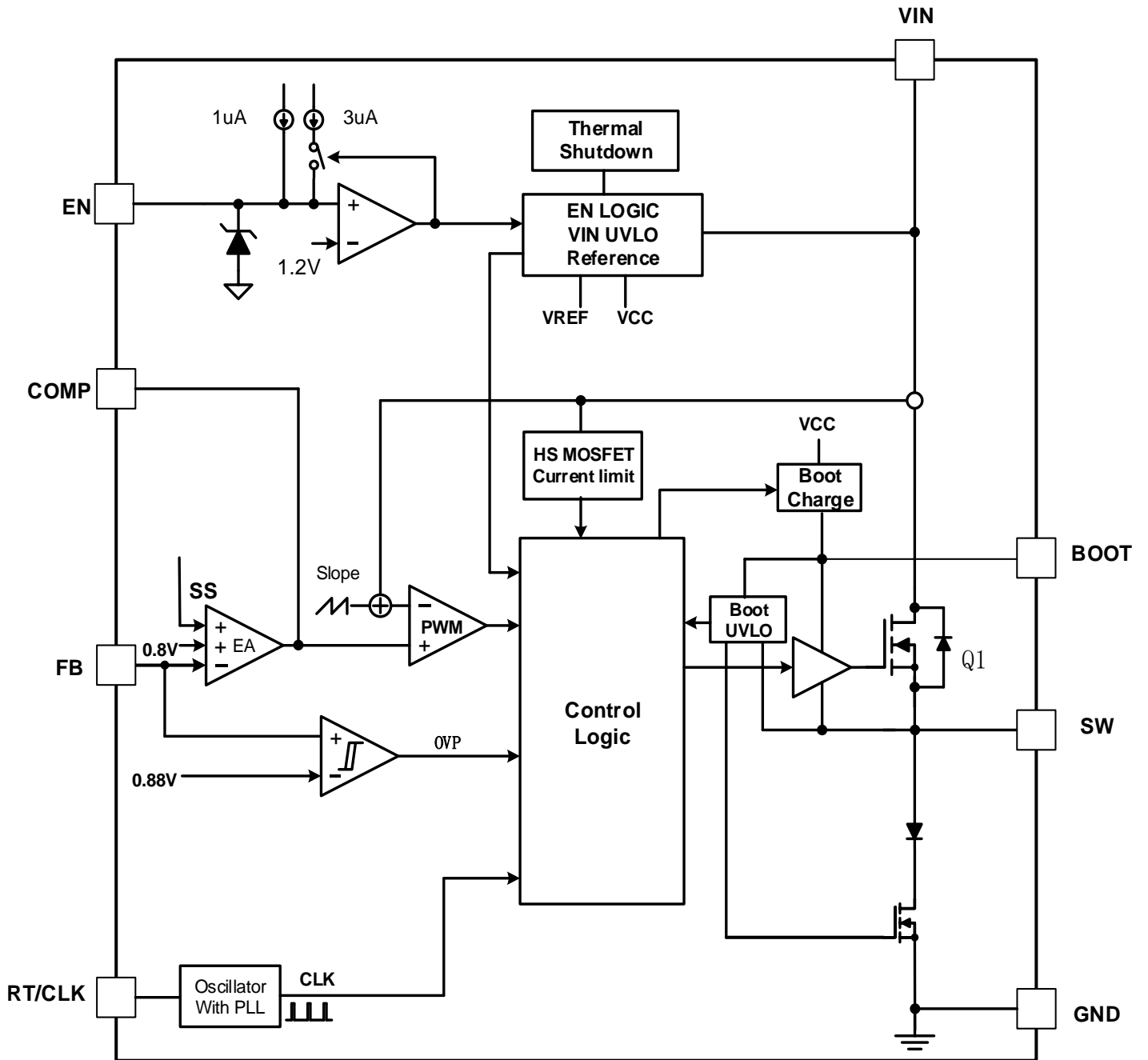
THERMAL INFORMATION

ELECTRICAL CHARACTERISTICS

--	--	--	--	--

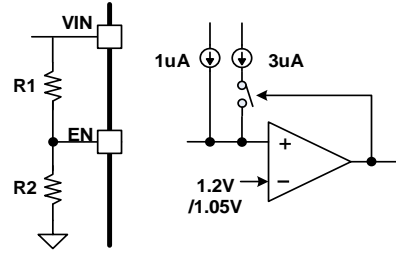
TYPICAL CHARACTERISTICS

FUNCTIONAL BLOCK DIAGRAM



OPERATION

$$\begin{array}{r}
 3 \quad \frac{207}{537} \\
 \hline
 \frac{327}{327}
 \end{array}$$



1% tolerance

— 3

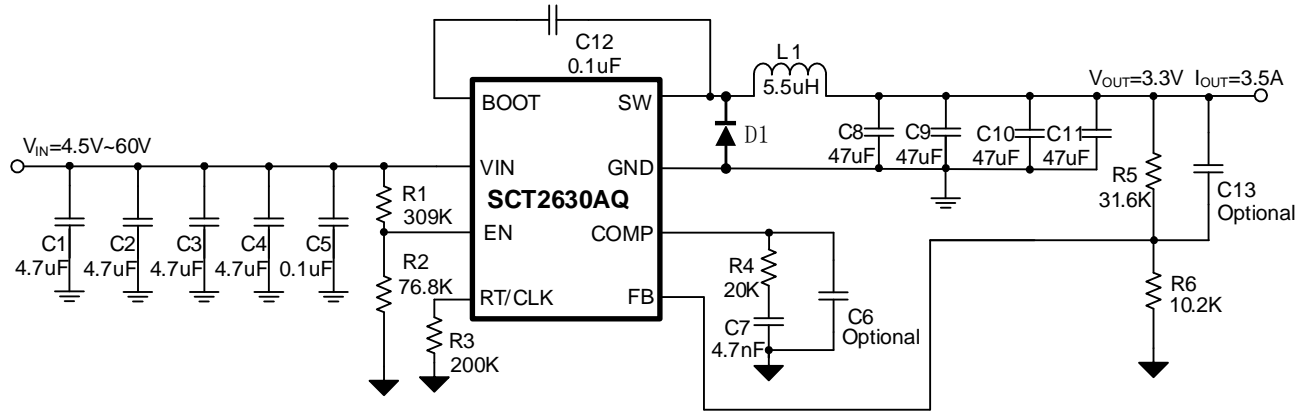
322222



OoZz



APPLICATION INFORMATION



— 3

322222

$$\begin{array}{r} 3 \quad \frac{207}{537} \quad 0 \\ \frac{327}{327} \quad 1 \end{array}$$

3

$$\frac{3}{3}$$



— 3 —







—

3 —

3 —

3

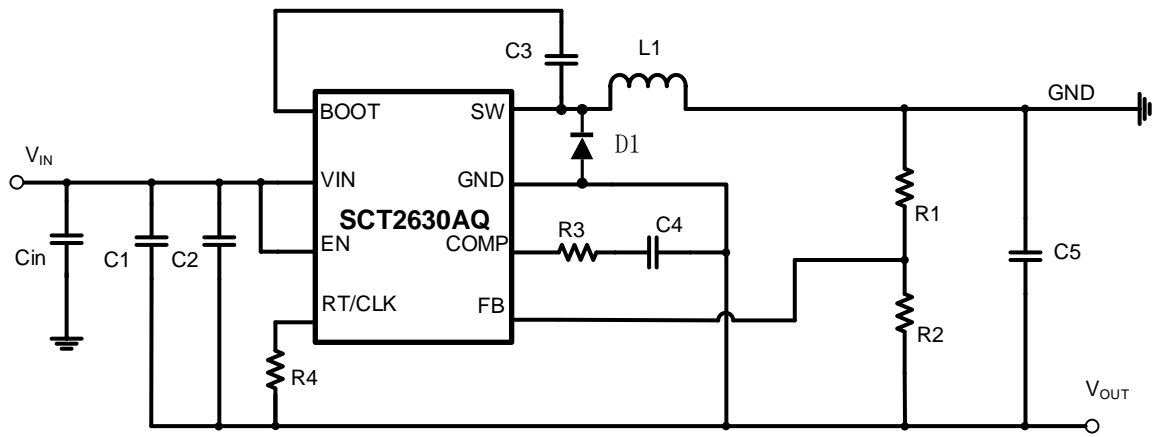
3

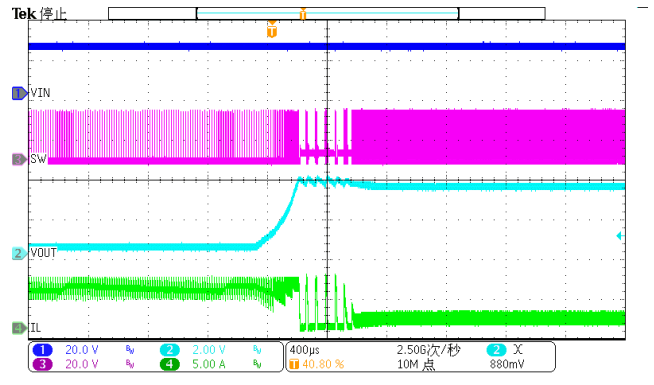
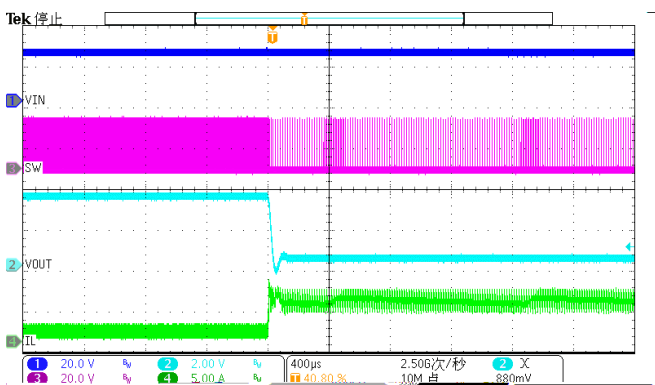
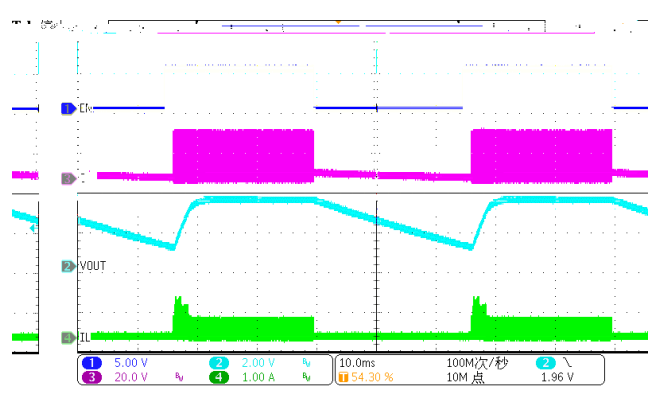
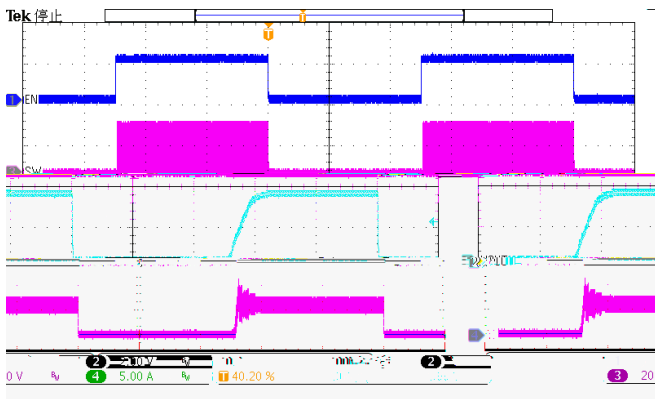
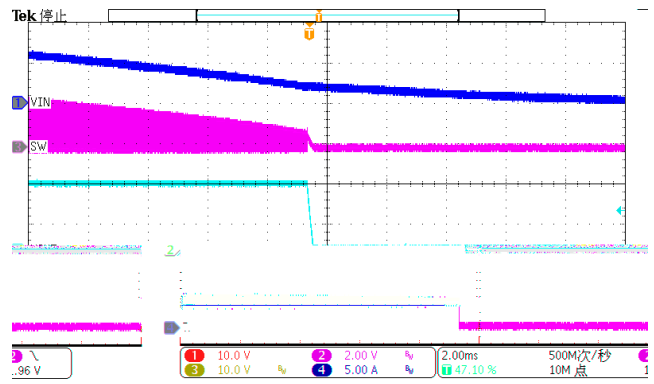
3

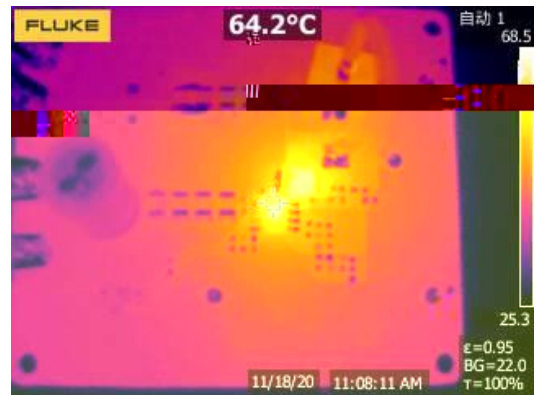
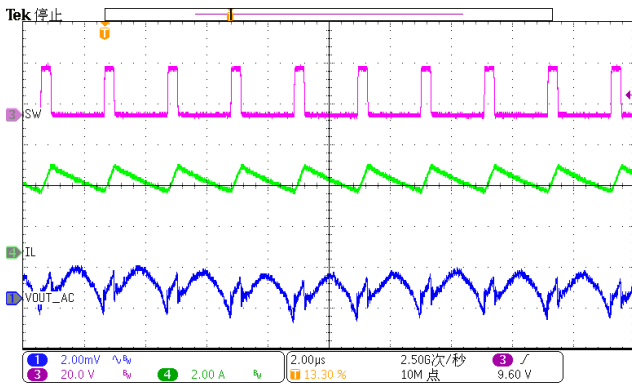
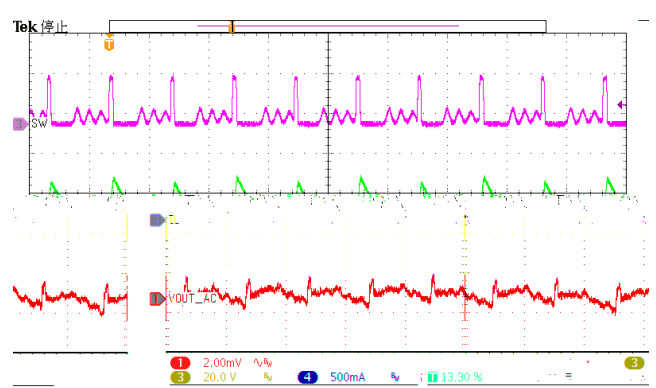
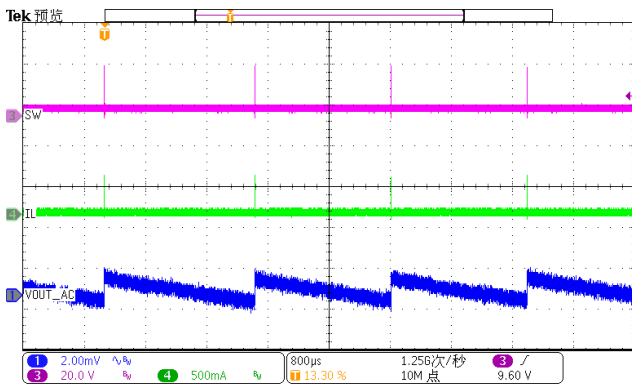
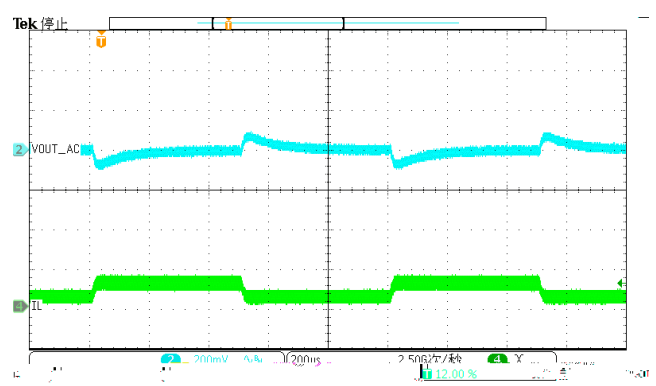
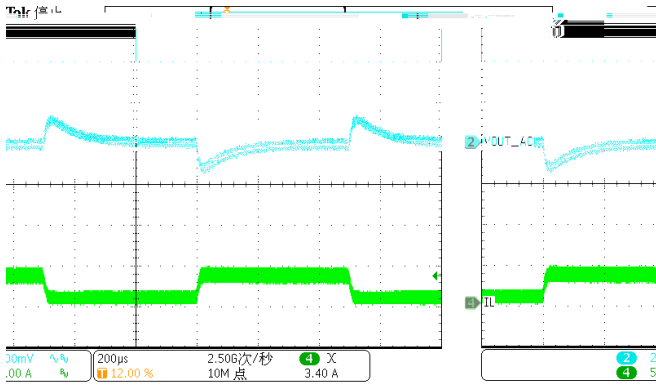
— —



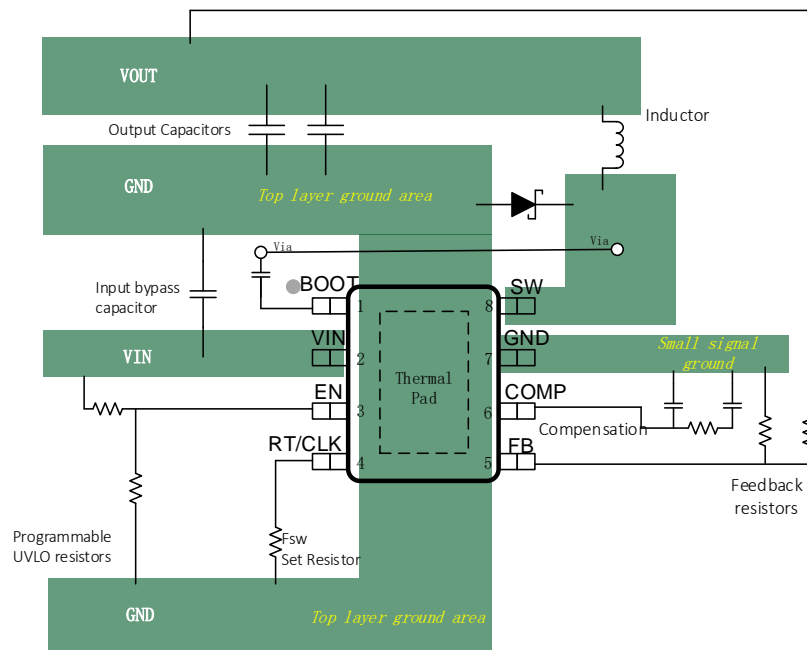








- 1.
- 2.
- 3.
- 4.
- 5.
- 6.
- 7.
- 8.
- 9.
- 10.



TAPE AND REEL INFORMATION

