
REVISION HISTORY

DEVICE ORDER INFORMATION

ABSOLUTE MAXIMUM RATINGS

PIN CONFIGURATION

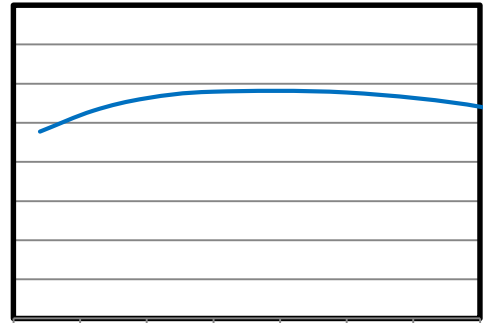
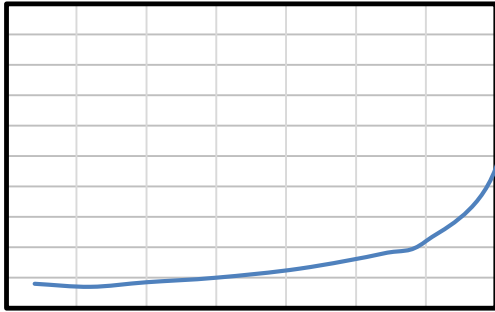
RECOMMENDED OPERATING CONDITIONS

ESD RATINGS

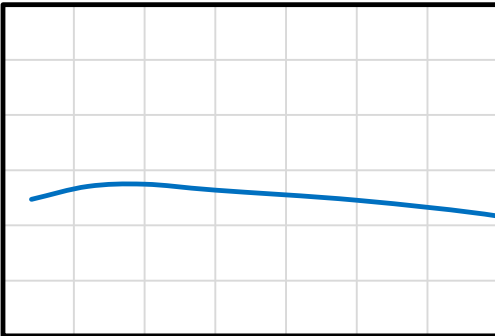
- (1)
- (2)

THERMAL INFORMATION

P

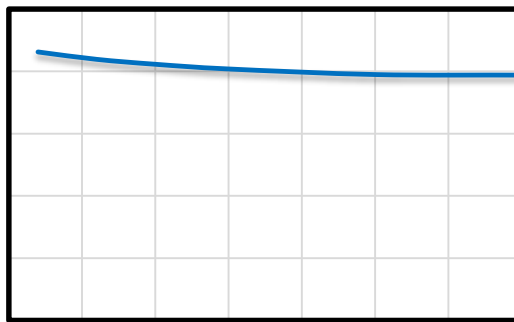
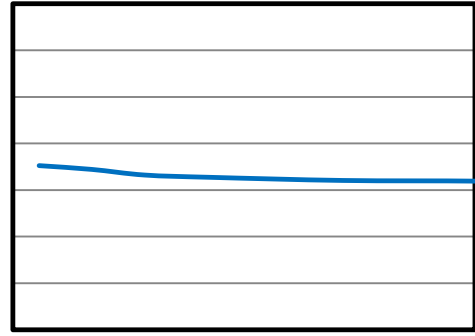


L

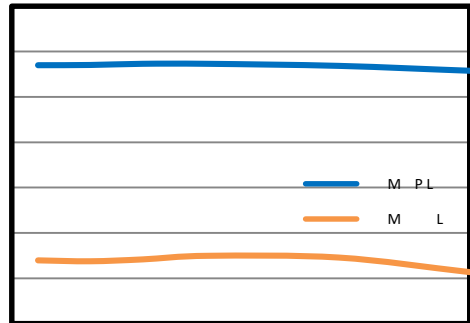


-50 -25 0 25 50 75 100 125

9.00
8.00
7.00
6.00
5.00
4.00
3.00
2.00



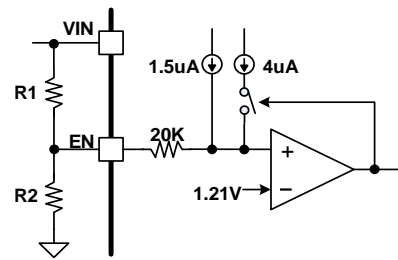
Temperature (°C)



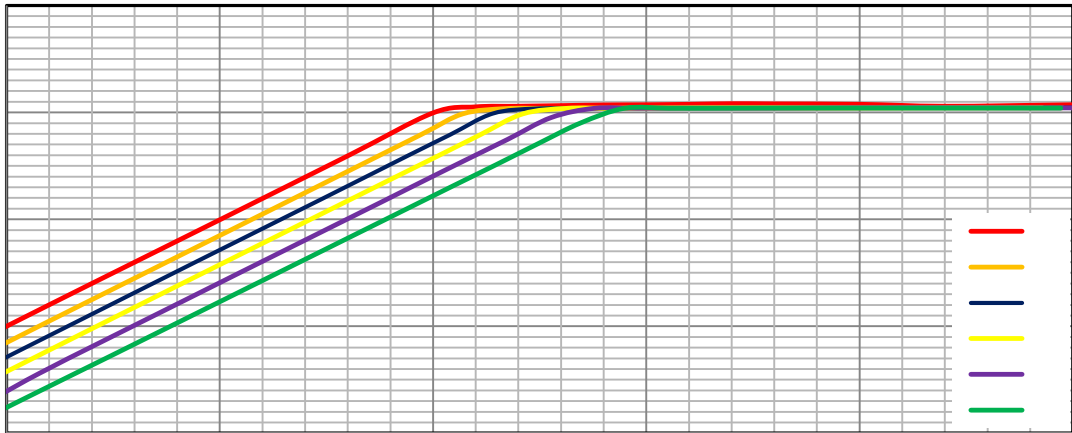


FUNCTIONAL BLOCK DIAGRAM

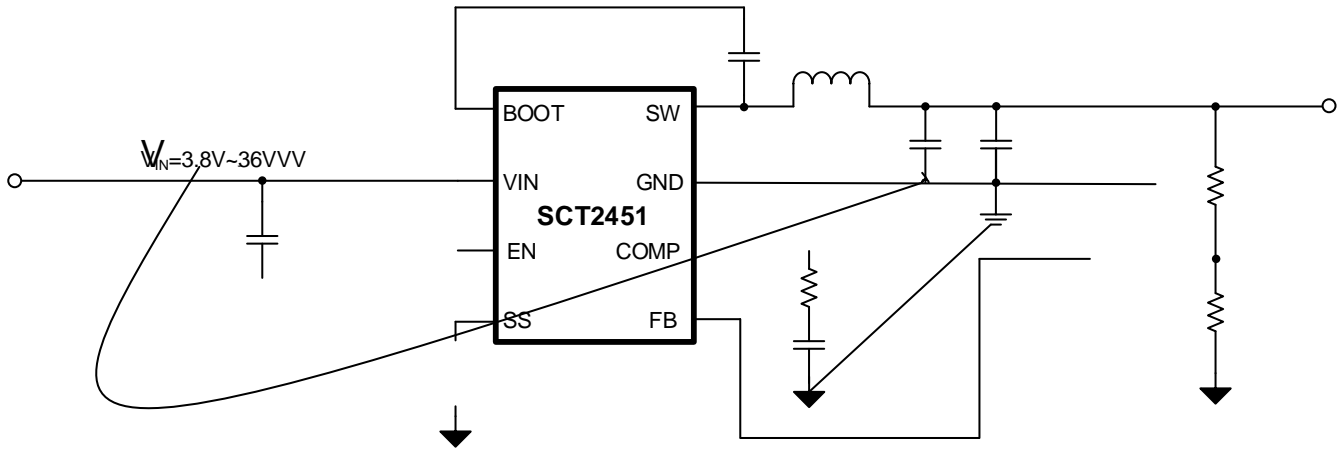
OPERATION



1%



APPLICATION INFORMATION



	24V Normal 3.8V to 36V
	16.5mV
	Vout = 135mV



—

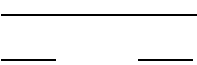
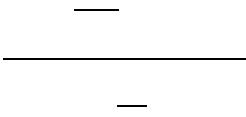
—

—

WR

'iíy r ~ð y(t8t0 Ô`



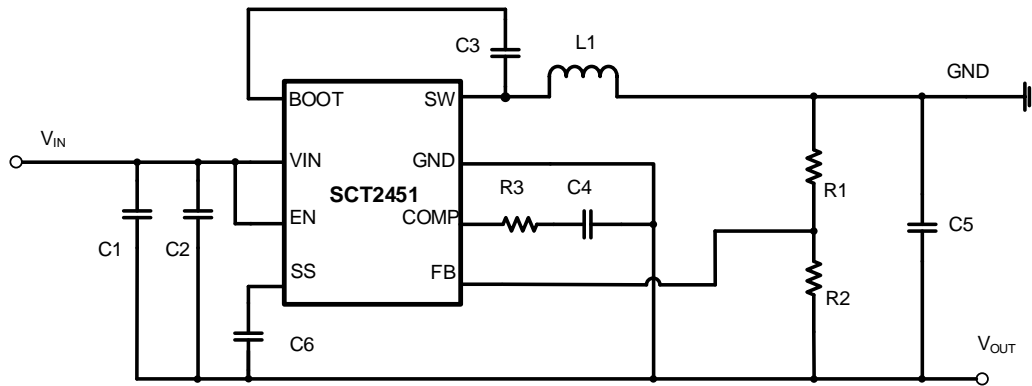








		M			



1.

2.

3.

4.

PACKAGE INFORMATION

TAPE AND REEL INFORMATION

