

---

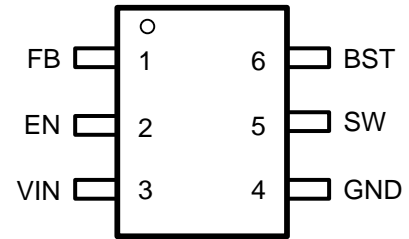
---

1)		

---

Over operating free-air temperature unless otherwise noted<sup>(1)</sup>

DESCRIPTION	MIN	MAX	UNIT
BST	-0.3	40	V
VIN, SW, EN	-0.3	34	V
FB	-0.3	5.5	V
Operating junction temperature <sup>(2)</sup>	-40	125	°C
Storage temperature T <sub>STG</sub>	-65	150	°C



Top View: TSOT23-6L, Plastic

(1)

(2)

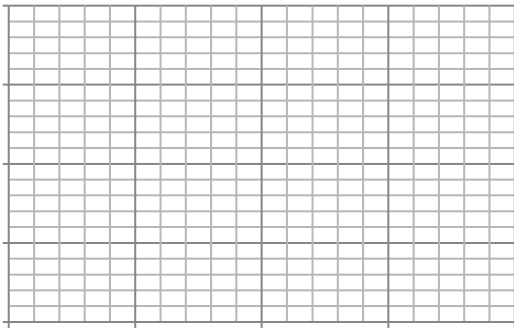
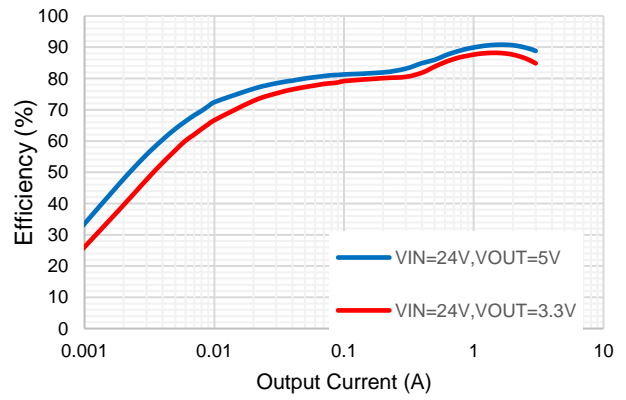
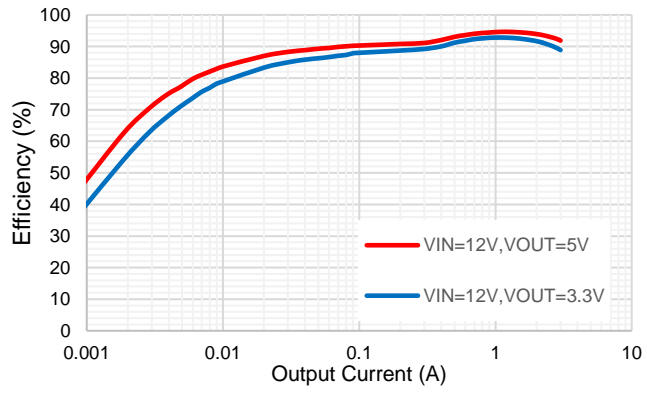
---

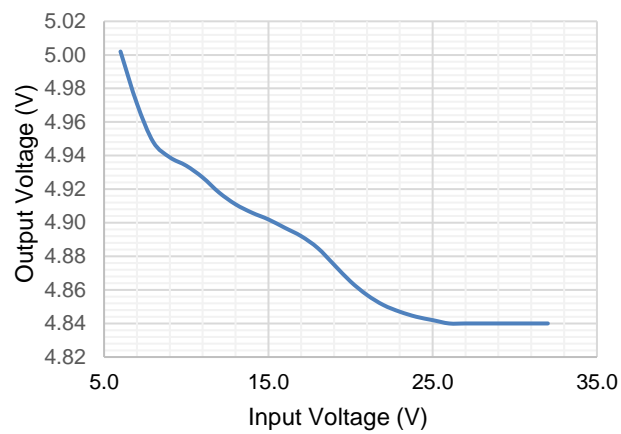
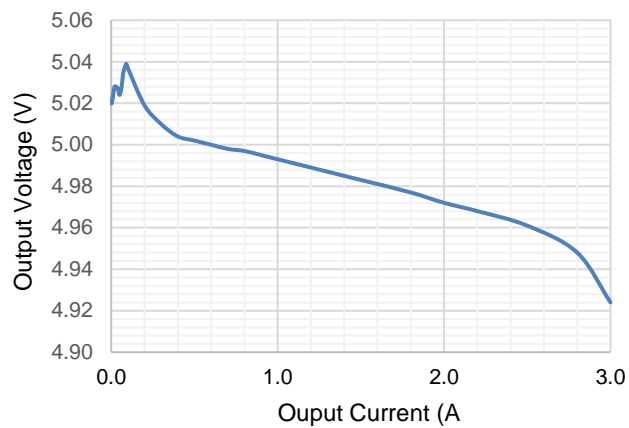
BST	6	Power supply for the high-side power MOSFET gate driver. Must connect a 0.1uF or greater ceramic capacitor between BST pin and SW node.
-----	---	---

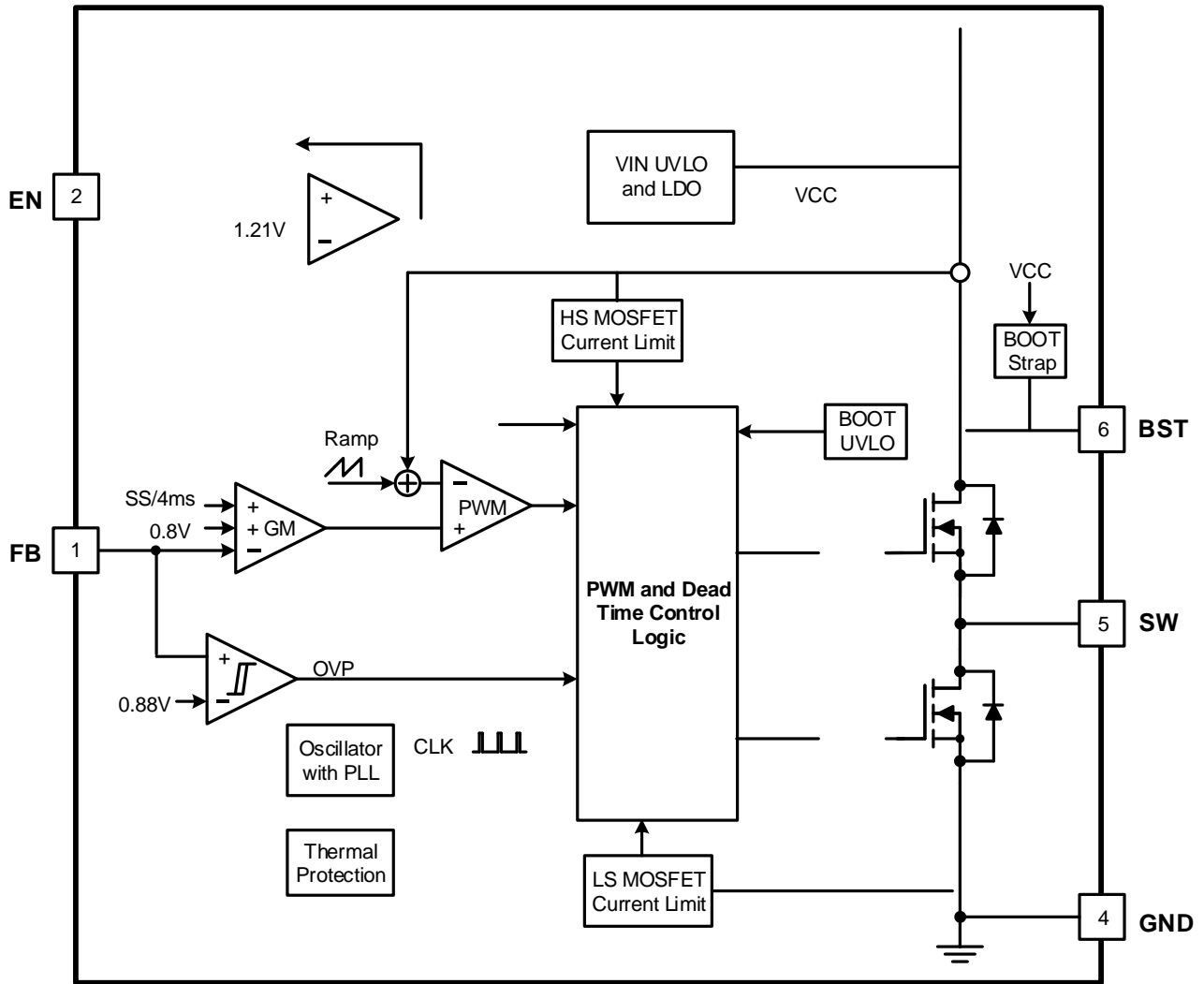

--	--	--	--	--

---



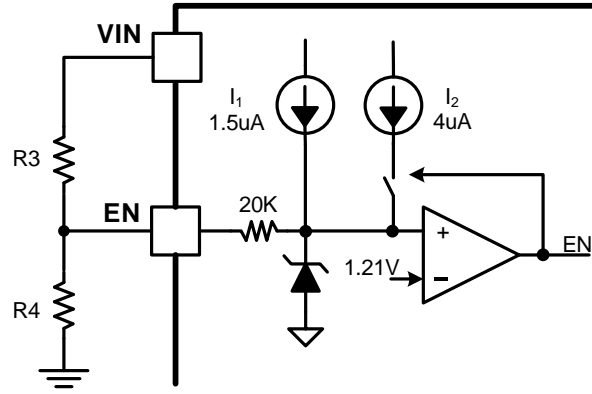













\_\_\_\_\_

\_\_\_\_\_

\_\_\_\_\_

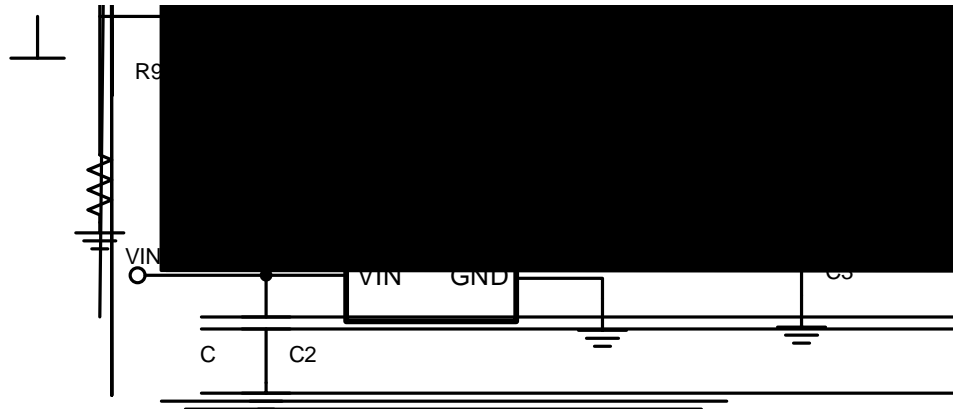
(1)

\_\_\_\_\_

(2)







Design Parameters	Example Value
Input Voltage	24V
Output Voltage	5V
Output Current	3A
Output voltage ripple (peak to peak)	$\pm 0.3V$
Switching Frequency	400kHz

---

(3)

- 
- 
- 

(4)

- 

(5)

- 
- - 
  -



\_\_\_\_\_

(10)

\_\_\_\_\_

(11)

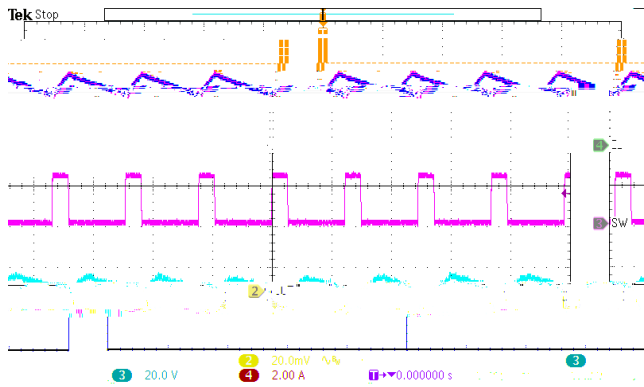



Figure 16. SW node waveform and Output Ripple  
VIN=24V, IOU=3A

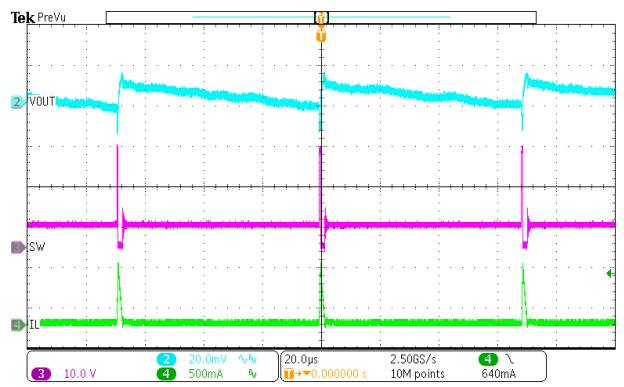


Figure 17. SW node Waveform and Output Ripple  
VIN=24V, IOU=10mA

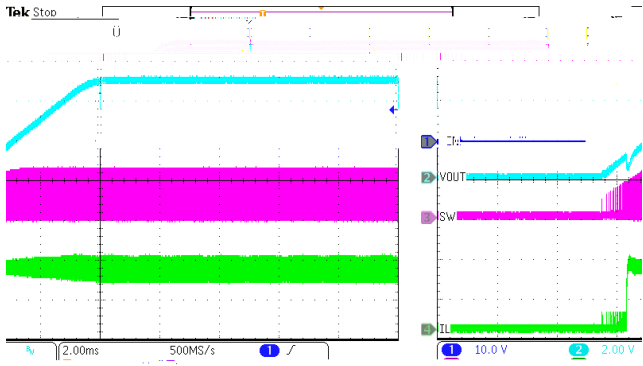


Figure 18. Power Up  
VIN=24V, VOUT=5V, IOU=3A

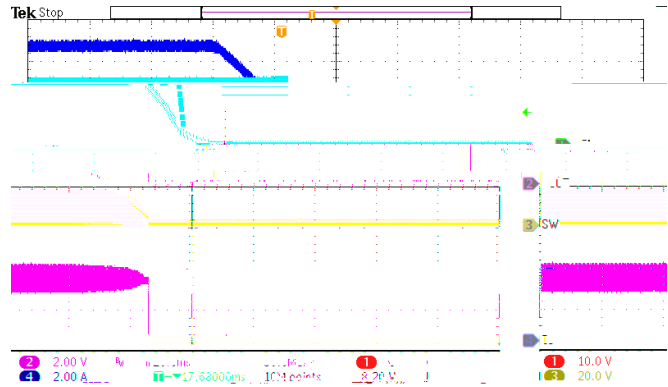


Figure 19. Power Down  
VIN=24V, VOUT=5V, IOU=3A

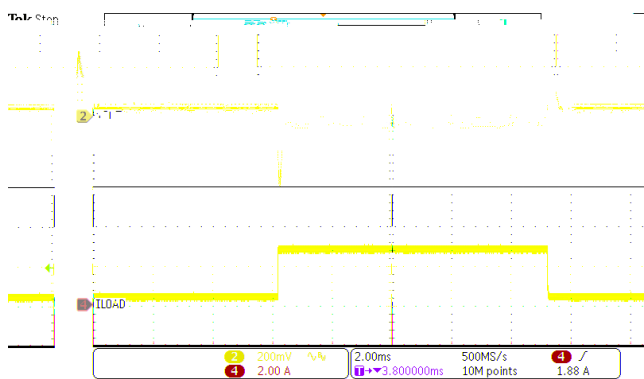


Figure 20. Load Transient  
VOUT=5V, IOU=0.3A to 2.7A, SR=250mA/us

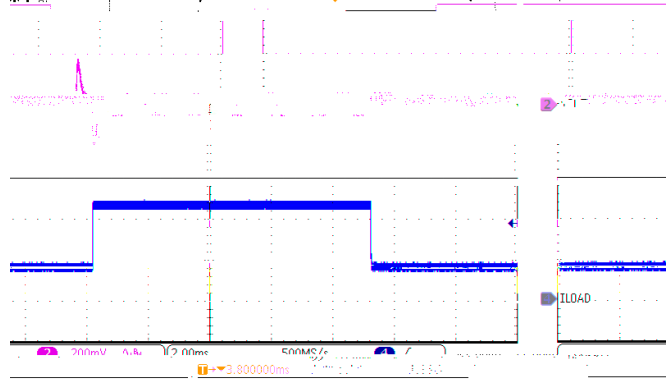


Figure 21. Load Transient  
VOUT=5V, IOU=0.75A to 2.25A, SR=250mA/us



---



1.



